

## 2014-2016 DCEDC Investors

### Diamond (\$55,000 and up)

County of Door

### Platinum (\$5,000 - \$54,999)

Bay Shipbuilding  
City of Sturgeon Bay

Sturgeon Bay Utilities

### Gold (\$2,500 - \$4,999)

Baylake/Nicolet Bank  
Hatco Corporation  
Ministry Door County Medical Center

Nsight/Cellcom  
Village of Sister Bay  
Wisconsin Public Service

### Silver (\$1,000 - \$2,499)

American Transmission Company  
Associated Bank  
Bank of Luxemburg  
Be's Coffee & Vending  
Marine Travelift/ExacTech  
N.E.W. Industries

Palmer Johnson Yachts, LLC  
Therma-Tron-X, Inc.  
Village of Egg Harbor  
WireTech Fabricators  
Wulf Brothers

### Bronze (\$500 - \$999)

Action Realty  
Alberts Plastering  
Anna's Healthcare  
AT&T  
C&S Manufacturing Corp.  
Capital Credit Union  
Door County Advocate  
Door County Coffee & Tea Company  
Door Peninsula Winery & Distillery  
Keller, Inc.  
KerberRose, SC

Main Street Market  
Northeast WI Technical College  
Peninsula Building Systems  
Piggly Wiggly - Sister Bay  
Pine Crest Village  
Pinkert Law Firm  
Portside Builders  
Pro Products, Inc.  
Renard's Cheese Store, LLC  
Roen Salvage Co.  
Stone Harbor Resort

### Copper (under \$500)

American Family Insurance  
Bay Electric Systems  
Bayland Buildings, Inc.  
Bayside Home Medical  
Bridgeport Resort  
Chapman Technical Services  
Country Ovens  
Dan's Fish, Inc.  
DC Printing  
Door County Brewing Co.  
Door County Eye Associates  
Door County Hardware  
Door County Lavender & Lemon  
Door County Mustard  
Door County Traders  
Door County Trolley  
Door Landscape & Nursery  
Eagle Mechanical  
ERA/Starr Realty  
First Merit Bank  
Flanigan Distributing  
FLS Banners, Ltd.  
Foremost Management

Frontier Communications  
5G Benefits, LLC  
Going Garbage & Recycling, Inc.  
Heyrman Construction Co.  
HTF, Inc.  
Huehns Funeral Home  
Insurance Center of Sturgeon Bay  
Jim Olson Motors, Inc.  
JR Vacation Rentals & Cleaning Service  
Just In Time Corporation  
Key Industrial Plastics, Inc.  
Lampert Lumber  
LfpDesign! LLC  
Logan Creek Soap  
May Realty  
McDonald's  
Meissner Landscape  
Northland Steel Co., Inc.  
North Shore Bank  
Northstar Consulting, LLC  
PIP Printing  
Premier Search Associates  
Simon Creek Vineyards

continued

### Copper (under \$500), continued

Soik Communications  
Soil Specialists, Ltd.  
Stangel Accounting & Tax Office, SC  
Stoneman-Schopf Agency, Inc.  
Sturgeon Bay Metal Products, Inc.  
The Cookery  
True North Real Estate, LLC  
Van's Lumber & Custom Builders, Inc.  
Viking Electric Supply, Co.  
W.E. Builders

Warner-Wexel, LLC  
Waseda Farms  
Washington Island Ferry Line  
Welcome Home Realty  
Wild Tomato Pizza  
Wood Orchard, LLC  
Woodrow Engineering  
Yankee Clipper/Clipper's Mate  
Young Automotive

### In-kind Contributors

Boettcher Communications  
Door County Visitor Bureau  
MasterCare Cleaning  
Schenck Business Solutions

Stone Harbor Resort  
Sturgeon Bay Visitor Center  
Sturgeon Bay Florist  
Wisconsin Public Service

## 2016 Board of Directors

### Officers

**Mike Baudhuin** - Chair  
*WireTech Fabricators & DC Manufacturers Association*

**Darren Voigt** - Vice-Chair  
*Bank of Luxemburg*

**Leslie Gast** - Treasurer  
*Nicolet Bank & Sturgeon Bay Visitor Center*

**William Chaudoir** - Secretary  
*Door County Economic Development Corporation*

### Directors

**Dan Austad**, *County of Door*  
**Nate Bell**, *Sister Bay*  
**Thad Birmingham**, *Mayor, City of Sturgeon Bay*  
**Jan Campbell**, *ERA/Starr Realty & DC Board of REALTORS*  
**Ron Flittner**, *Tannenbaum Shop & DC Visitor Bureau*  
**Kathy Schultz**, *County of Door*  
**Patti Vickman**, *Southern Door County School District*  
**Jerry Worrick**, *Ministry Door County Medical Center*

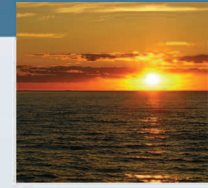
### Ex-Officio Directors

**Rob Burke**, *UW-Extension*  
**Zeke Jackson**, *Village of Sister Bay*  
**Jack Moneypenny**, *Door County Visitor Bureau*  
**Ken Pabich**, *County of Door*  
**Pam Seiler**, *Sturgeon Bay Visitor Center*  
**Jim Stawicki**, *Sturgeon Bay Utilities*  
**Dale Swanson**, *Wisconsin Public Service Corporation*  
**Cheryl Tieman**, *Northeast Wisconsin Technical College*  
**Josh VanLieshout**, *City of Sturgeon Bay*

### Staff

**William Chaudoir**, *Executive Director*  
**Markie Bscherer**, *Business & Education Manager*  
**Sam Perlman**, *Economic Development Manager*  
**Paula Sullivan**, *Operations Manager*  
**Cindy Wick**, *Office Assistant*

# The Perfect Climate for Business



BUSINESS By NATURE<sup>®</sup>  
**DOOR COUNTY**  
ECONOMIC DEVELOPMENT CORPORATION

## Partnership Prospectus

185 East Walnut Street  
Sturgeon Bay, WI 54235  
920.743.3113 800.450.3113  
[www.doorcountybusiness.com](http://www.doorcountybusiness.com)

## Join the DCEDC Partnership!

The Door County Economic Development Corporation (DCEDC) is pleased to present you with an opportunity to invest in the future of our community. When you invest in DCEDC, you are joining a proven partnership of public and private sector organizations that is committed to the continued economic prosperity of Door County.

## The DCEDC Story

DCEDC has been providing professional economic development services in Door County for nearly 28 years. DCEDC's formation in 1989 started a new chapter in the County's history, where business interests, private investment and jobs were elevated to a new level of importance.

Serving as the County's primary business advocate, DCEDC continues to raise the awareness of elected officials and community residents about the vital role local businesses play in enhancing the quality of life that we all enjoy in Door County.

Because economic development in Door County is good for *all* businesses, existing companies are an important source of financial support for DCEDC. This voluntary investment, donated over a three-year period, enhances the ability of DCEDC to provide business assistance, financial incentives and other initiatives designed to strengthen the local business climate.

These private funds are combined with local government investments, grants and contract service fees to provide the resources necessary for DCEDC to fulfill our mission.

### Our Mission Statement

The Door County Economic Development Corporation is a public/private partnership dedicated to improving the economic vitality of the county and its residents.



## How To Join

To join or renew our partnership, simply complete the enclosed Investor Commitment Form and send to DCEDC, 185 East Walnut Street, Sturgeon Bay, WI 54235. There is no need to send any funds now. We will invoice you in accordance with the payment schedule you choose. DCEDC is a non-profit charitable organization under Section 501(c)3 of the IRS; all contributions are tax deductible to the full extent of the law.

# Programs That Deliver Results!

## Workforce Development

- The biggest challenge facing employers right now is **workforce**. DCEDC is redoubling our efforts to attract and retain skilled workers to our area. Our new initiative, *Grow Door County – A Workforce for the Future*, addresses three key areas:
  - “Inspired” Business & Education Partnerships
  - Employee Recruitment and Retention
  - Workforce Housing
- Launched the **NexGen Young Professionals network** to attract and retain young professionals from all local industries to our community.
- We are working closely with area school districts on the implementation of the state-mandated **Academic and Career Planning initiative**, to better prepare students for post-graduate training and employment using the Inspire model to connect students with the business community.
- Sturgeon Bay, Egg Harbor (V), Baileys Harbor, Sister Bay and other communities are actively seeking solutions and developers for **workforce housing opportunities**.



## Business Assistance



- DCEDC provides **personalized assistance to almost 200 new and existing businesses** each year, contributing to the retention and creation of hundreds of local jobs. We have helped dozens of new businesses get started in recent years.
- DCEDC continues to market the **Sturgeon Bay Industrial Park**, and helped facilitate the sale of six lots and the construction of 267,000 square feet of new manufacturing facilities in the past four years.
- Offering a regular schedule of **business education seminars** on a variety of topics.

## Entrepreneurship



- **Door County Business Development Center** is currently home to 15 businesses with 52 fulltime equivalent employees. Since inception, 21 companies have graduated from the business incubator facility, creating 84 jobs in the community.
- Partnership with the UW-GB Small Business Development Center brings a **business counselor for monthly visits** to Door County.

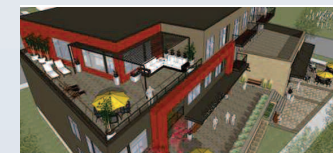
## Business Financial Assistance



- DCEDC provides a one-stop local source for **assistance on business financing and incentive programs**.
- During the 25-year history of the local **Revolving Loan Fund** programs, DCEDC has serviced **95 loans with a value of over \$12.7 Million**. Those loans leveraged \$63.4 Million in private investment, creating and retaining almost 1300 jobs.

## Community Development

- Celebrated the groundbreaking for the \$7.7 Million Bay Loft apartments development on North Madison Avenue in Sturgeon Bay.
- DCEDC has provided assistance to local communities' **municipal redevelopment plans**.
- DCEDC Technology Council worked to **improve countywide broadband and telecommunication services**, including redundant fiber services to the Industrial Park.



## Legislative Days

- DCEDC coordinates event for delegates traveling to Madison every two years for **meetings with state agencies and all legislators**. Results included successful advocating for numerous Door County programs.

