

AN ENVIRONMENT LIKE NO OTHER.

There are few places as remarkable
as the Door County Peninsula.

More than 300 miles of natural shoreline invite
you to kick off your shoes for a peaceful stroll in
the sand, to stargaze aboard a sailboat with the
wind as your guide, or arouse your senses with
abundant theater, music and art.

While many relish the Door County Peninsula
as a vacation destination, it's also known for
its ability to nurture a thriving population of
business owners and entrepreneurs. It's no
wonder. There's nothing more rewarding after
a busy workday than finding inspiration and
relaxation right outside your back door.



BUSINESS By NATURE

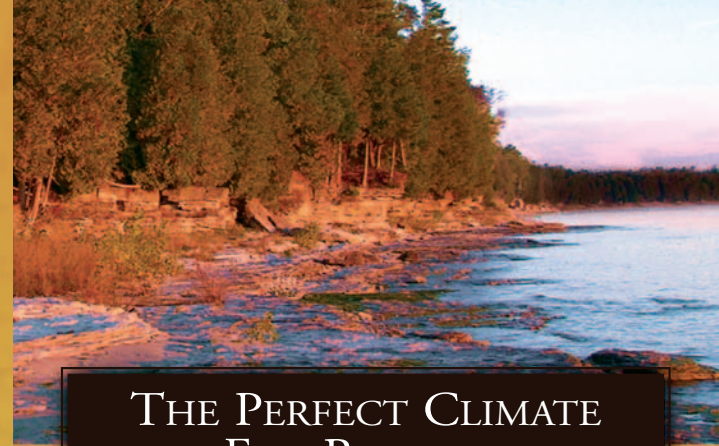


ECONOMIC DEVELOPMENT CORPORATION

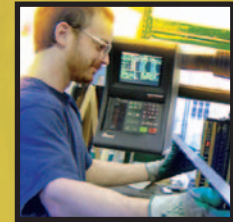
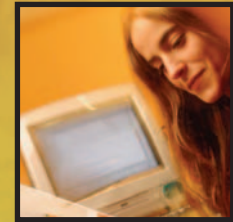
185 East Walnut Street
Sturgeon Bay, WI 54235
(920) 743-3113
(800) 450-3113

e-mail: bill@doorcountybusiness.com

www.doorcountybusiness.com



THE PERFECT CLIMATE
FOR BUSINESS



BUSINESS By NATURE



ECONOMIC DEVELOPMENT CORPORATION

DOOR COUNTY. IT'S GOOD FOR BUSINESS.

The Door County Economic Development Corporation partners with entrepreneurs to help build successful businesses in the Door County Peninsula. It's a rewarding relationship that allows businesses to tap into the expertise of area leaders, and provides them with access to a variety of local, state and federal resources.

FINANCING AND INCENTIVES

- Location Assistance
- Business Counseling
- Tax Credits
- Loan Programs
- Venture Capital
- Angel Investors
- Export Assistance

BUSINESS DEVELOPMENT CENTER

This 32,000 square-foot facility serves as a "small business incubator." Tenants, paying competitive rents, share services and equipment while getting their businesses off the ground.

STURGEON BAY INDUSTRIAL PARK

A 280-acre site in an ideal location along highway 42/57. Businesses are eligible for low cost sites and other financial incentives.

LOCAL STORIES. GLOBAL SUCCESSES.

The business climate in the Door County Peninsula is energized with companies whose products are marketed on the local and international stage. A century of shipbuilding serves as a solid foundation for a rapidly growing collection of manufacturing and service industries. A skilled workforce, brimming with ambition and a strong work ethic, helps foster their success. Workers here are resourceful and well educated. The Sturgeon Bay campus of Northeast Wisconsin Technical College and the University of Wisconsin-Green Bay campus provide ample opportunities for continuing education and training.

*We invite you to learn more about the Door County Peninsula.
It's a place where your business and your dreams can
flourish in an environment like no other.*

THE NATURAL CHOICE.

The Door County Peninsula is already home to a remarkably distinctive and successful community of business leaders and entrepreneurs. They have discovered that Door County is much more than a wonderful place to vacation. It's also a beautiful place to live and an excellent place for business.

They set their goal at having it all. In Door County they found that they could.

www.doorcountybusiness.com

BUSINESS *By* NATURE



CALL (800) 450-3113 or e-mail: bill@doorcountybusiness.com